

BEHRINGER X-TOUCH MIDI CONTROLLER

PANGOLAB CRAFTY LAYOUT

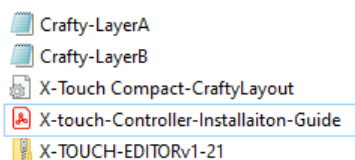
INSTALLATION GUIDE



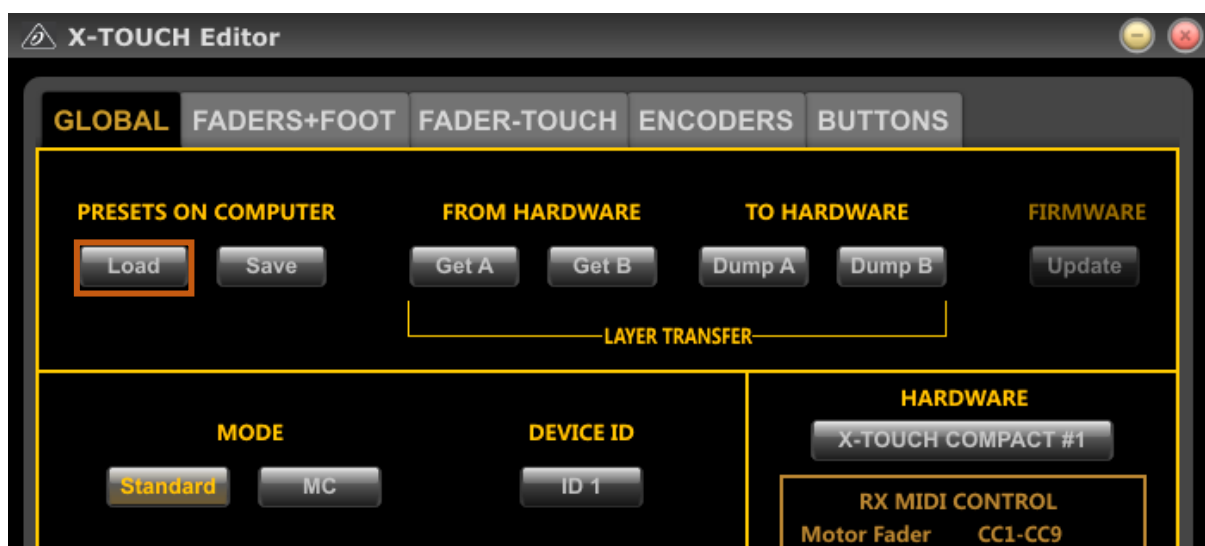
- Important -

this setup allows to use both A & B layers of the X-Touch Compact MIDI controller.  
It is highly recommended to use the magnetic Pangolab Crafty layout to identify the full setup  
on your controller. Ask your Prego and Wily! resellers for it.

- From Pangolab's website ([www.pangolab.com](http://www.pangolab.com)) download the crafty package
- Once downloaded, unzip the folder.
- You'll find all the files you need to install/set up the Behringer X-Touch consoles with Crafty layout for Prego lighting software.



- **Connect the console to the PC**
- Let Windows connected to the Internet detect and install drivers
- Install and launch the publisher X-Touch.exe



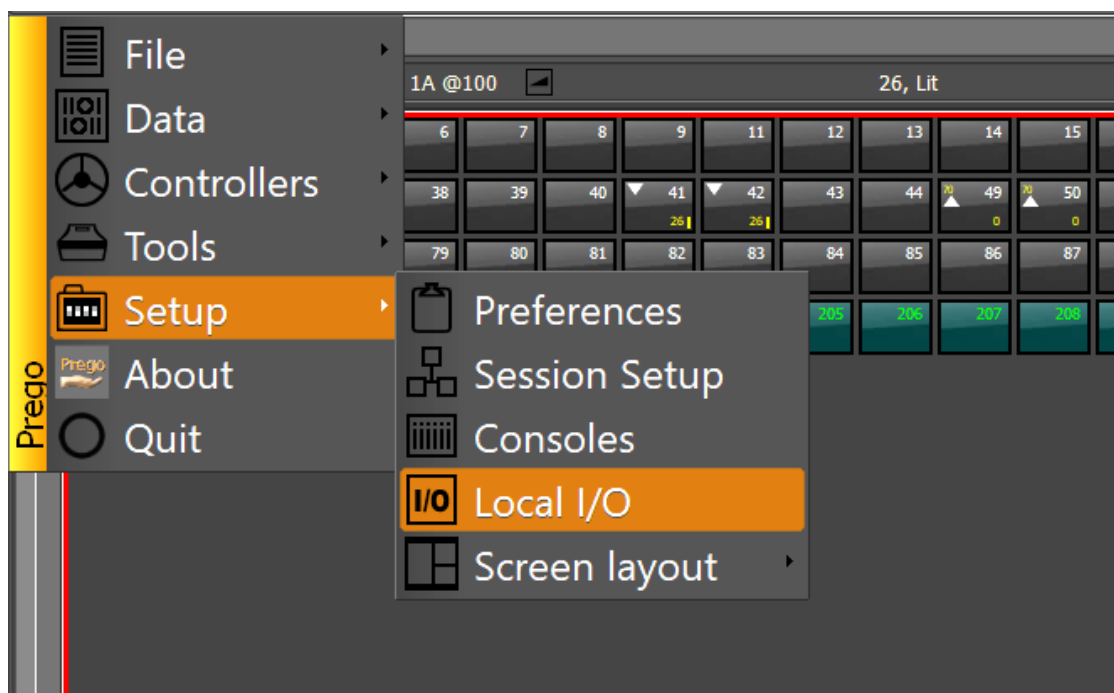
- Click **LOAD**, then navigate to the location where you unzipped the X-Touch files.
- Open the [Crafty-LayerA.bin](#) file, which loads the layout A into the program.
- To send it now to the console, click **ON DUMP A**, which sets up the layout A buttons and faders:



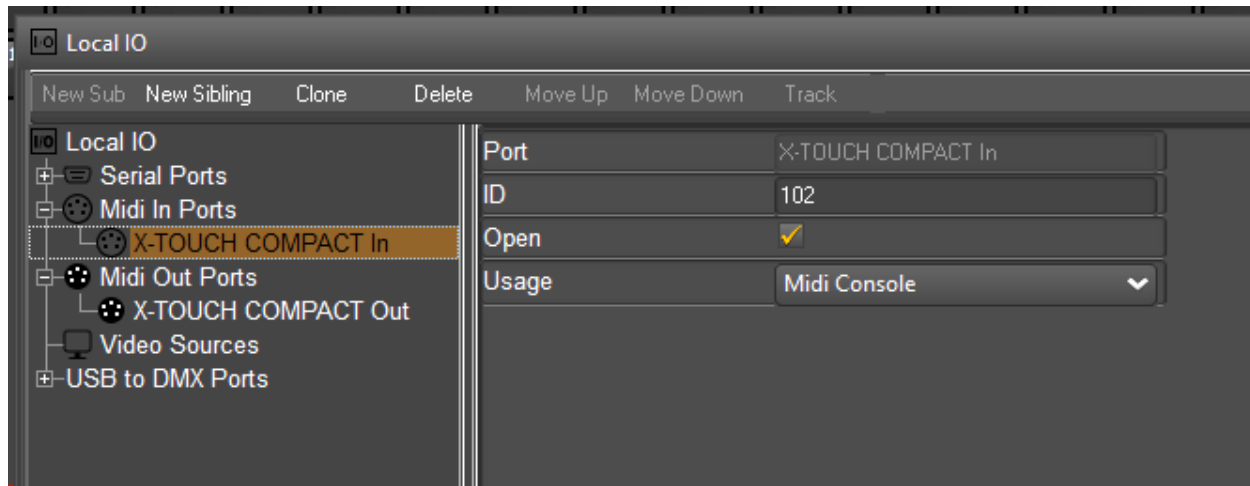
- Click **LOAD**, then navigate to the location where you unzipped the X-Touch files.
- Open the [Crafty-LayerB.bin](#) file, which **loads the layout B** into the program.
- To send it now to the console, click **ON DUMP B**, which sets up the layout B buttons and faders

**You must now close this application before continuing, otherwise the communication with Prego will not be possible!!**

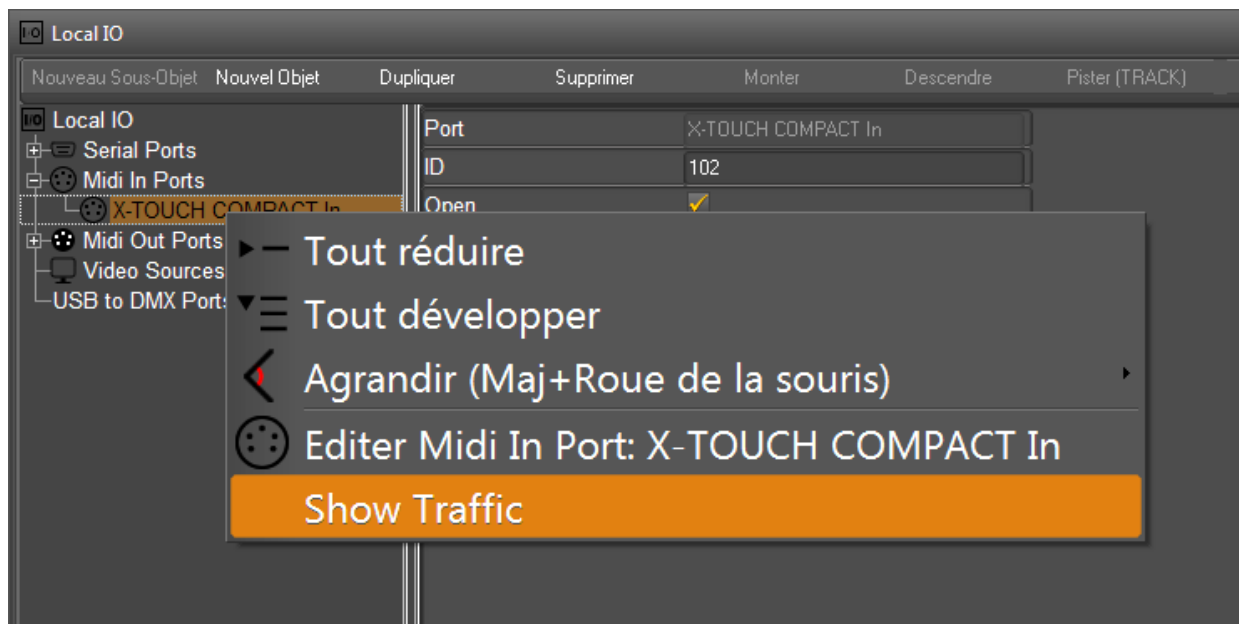
- **Start Prego 2.3.11.0 or higher**
- Go to Menu / Setup / **Local IO**
- The X-Touch will now appear in MIDI IN. Click below.



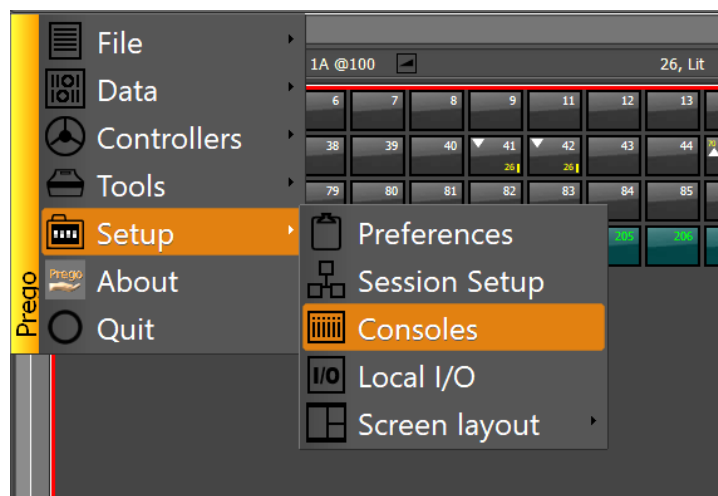
- Enter **102** in the ID field
- Check **Open** and choose **MIDI Console** from the list below
- Do the same for MIDI Out



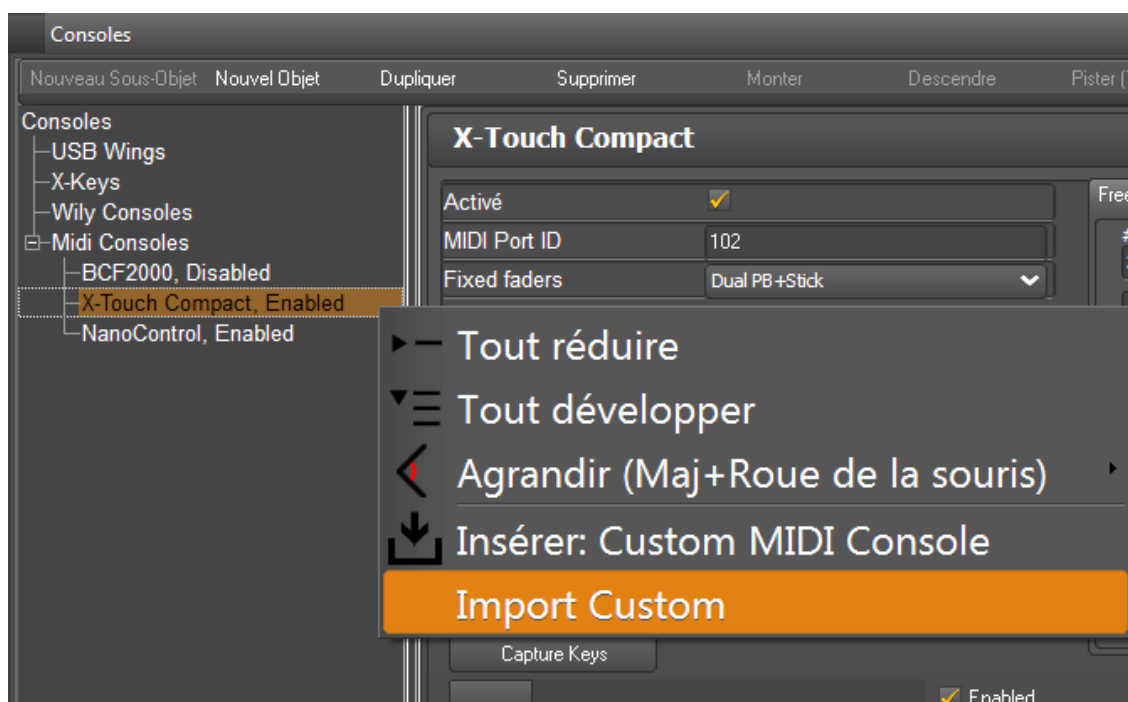
- During your tests if you want to check incoming or outgoing MIDI data, you can view traffic:



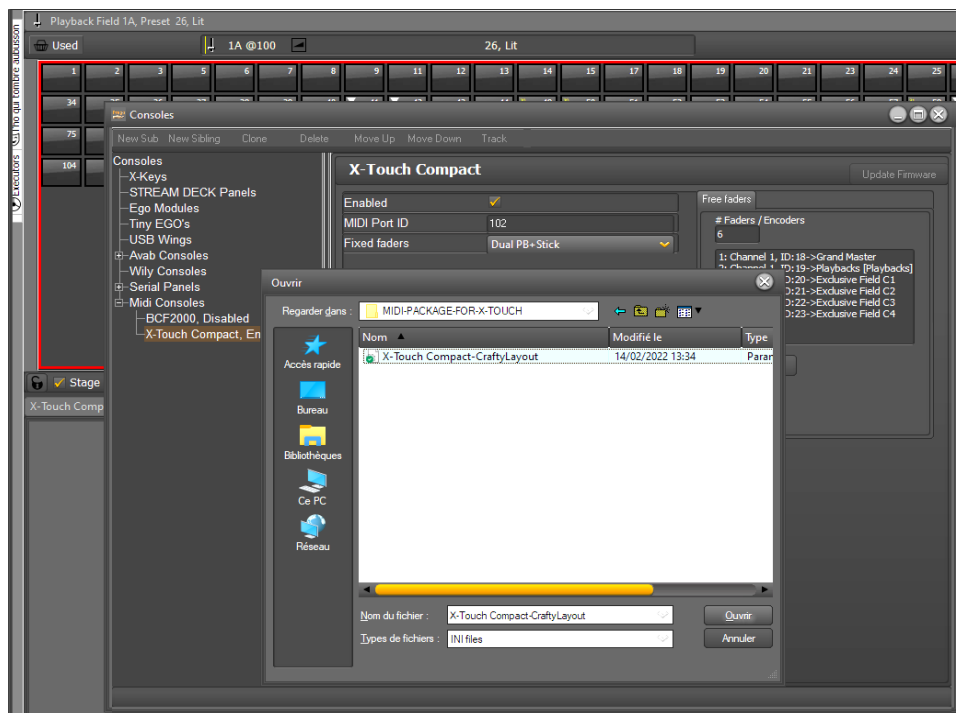
- Go to menu **Prego / Setup / Consoles**



- In **MIDI Consoles**, right click on X-Touch Compact then **Import custom**.

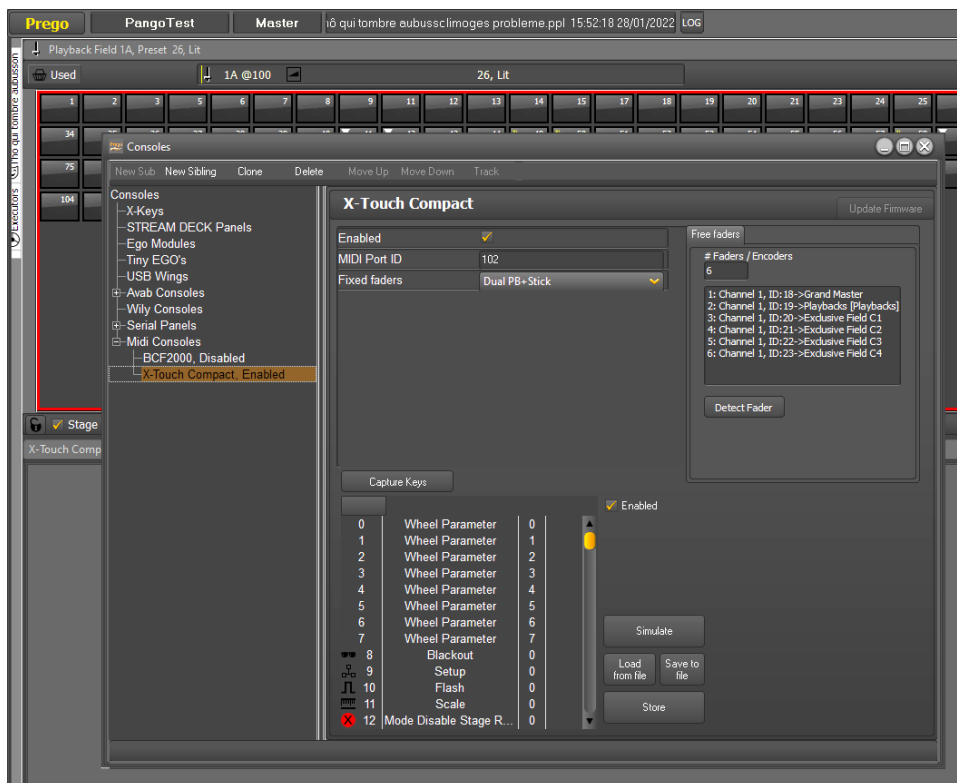


- Browse to the folder containing the **X-Touch Compact-CraftyLayout.ini** file and open it :

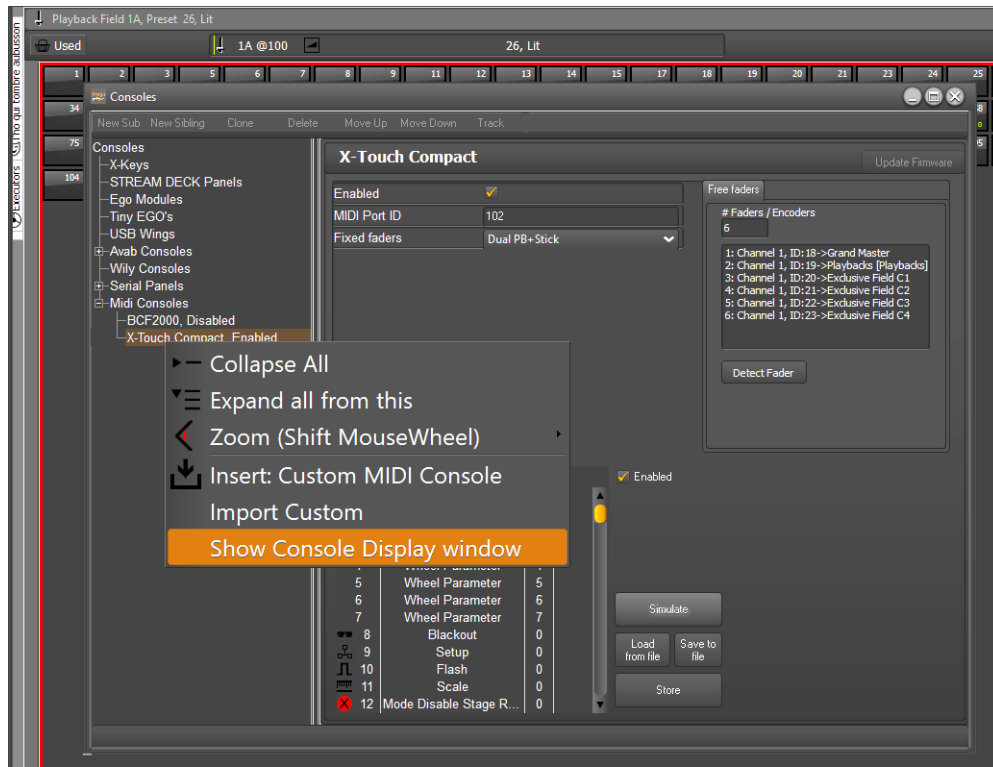


- Save the settings by clicking on **SAVE** button.

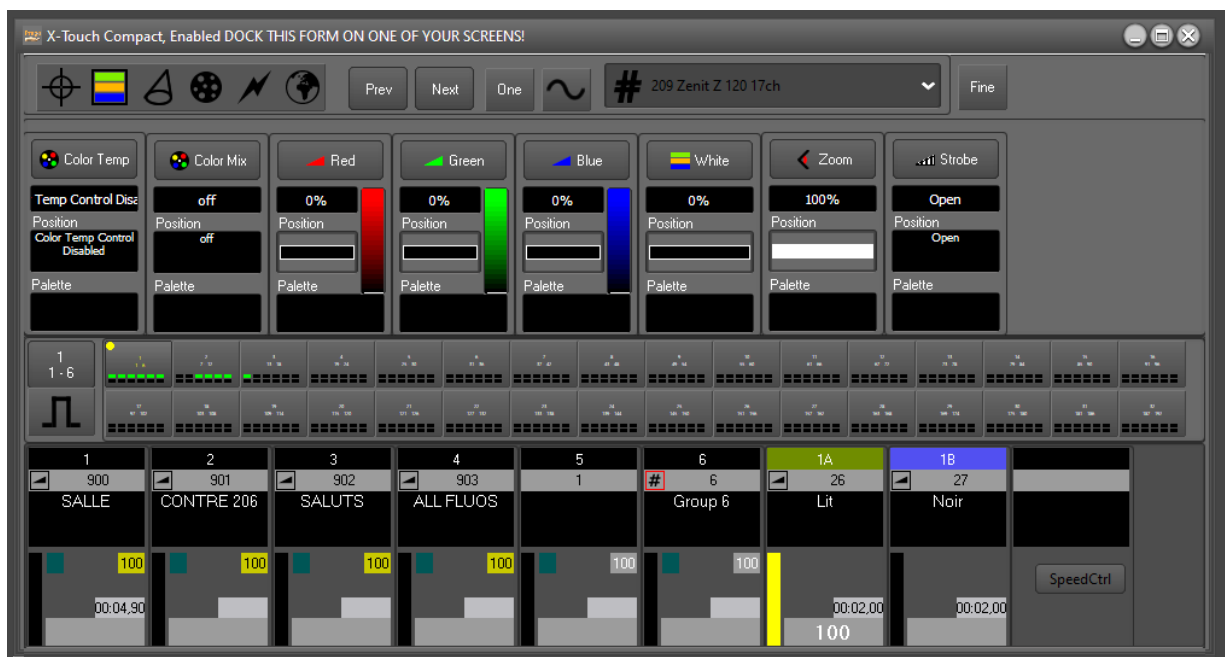
If you need to export this configuration to other PCs click the **Save to File** button, to save it to your hard drive or a USB stick.



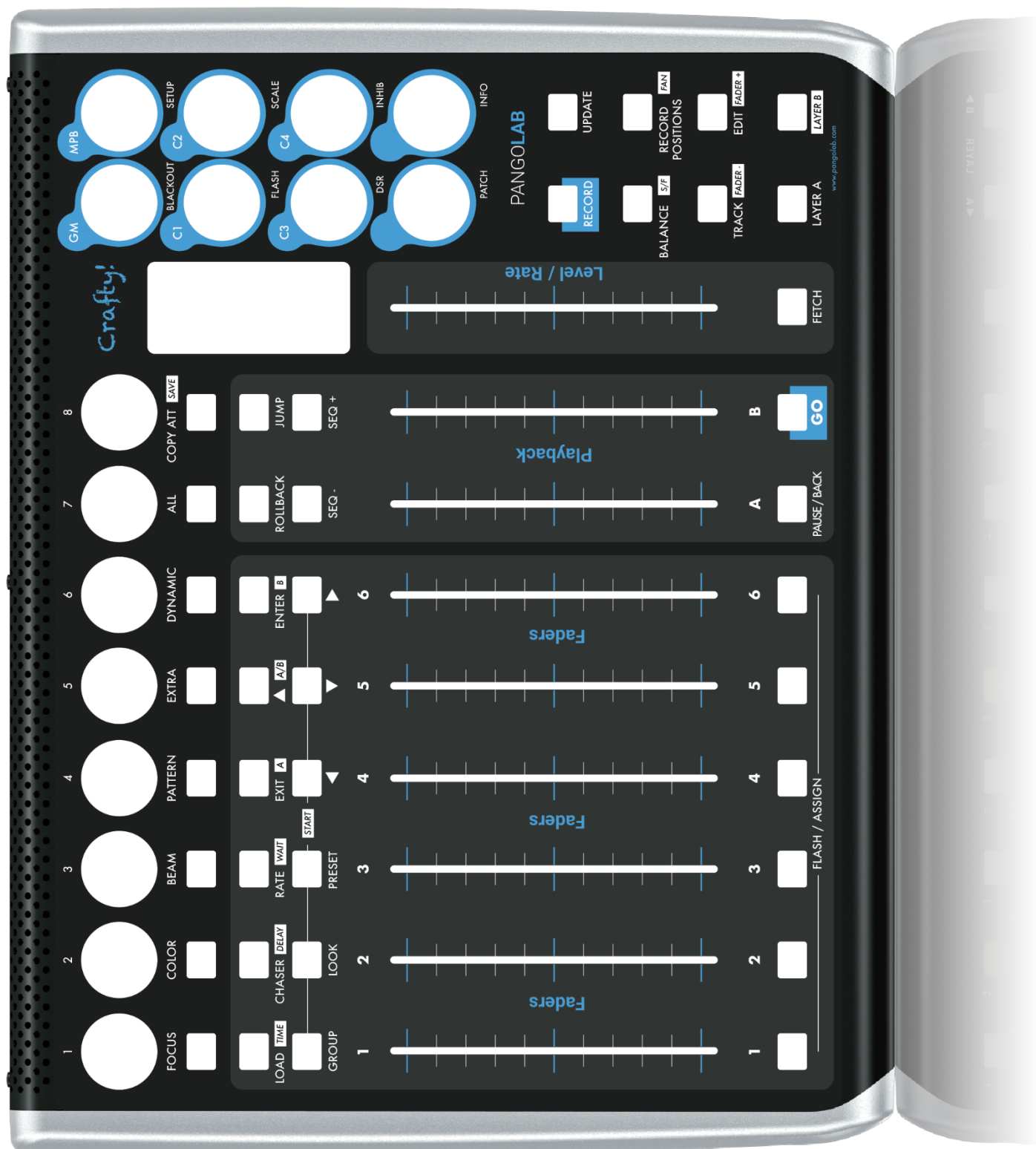
- Finally, it is imperative to open the control window dedicated to this console by making a right click on the console concerned on the left.



This window is opened then:



- Dock it in a sub-screen of your choice and have fun!



More informations about Crafty! : [www.pangolab.com](http://www.pangolab.com) / [contact@pangolab.com](mailto:contact@pangolab.com)